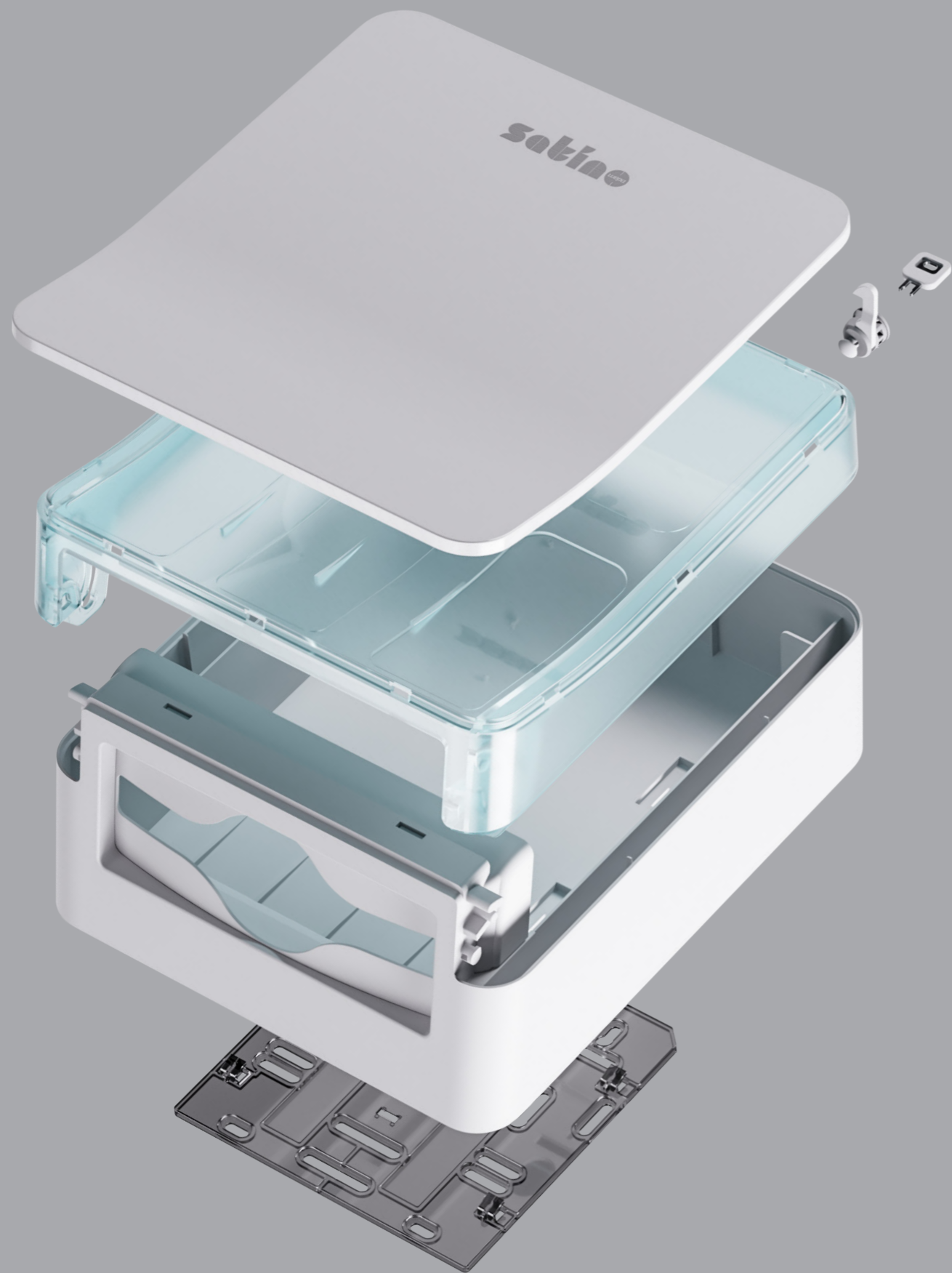


**HYGINITY.**  
The future  
of hygiene  
is curved.

**satino** WEGIA





“The HYGINITY dispenser series is the result of over 7,500 hours of intensive development work. Through the collaboration of various disciplines, a solution was created that combines design, hygiene, sustainability, and user-centered operation. Whether for high-traffic airports, small office washrooms, or sensitive hospital areas – HYGINITY meets the highest hygiene standards, adapts to every requirement, and looks aesthetically pleasing.”

---

**Matthias Post**

Head of Product Management/  
Technical Marketing, WEPA Professional



---

P **06** **HYGINITY**  
The Innovation

---

P **08** **Highlights**  
Product highlights

---

P **11** **Function**  
Mounting and operation

---

P **13** **Dispenser series**  
Dispenser, white  
Dispenser, black

---

P **18** **Services**  
Mounting service  
Smart-ready  
Spareparts-shop  
Circular Services by WEPA

---

# Simple use. Aesthetic design.

Design meets top performance and the highest user-friendliness. Users agree: the new HYGINITY dispenser series is among the most advanced hygiene solutions on the market.\* HYGINITY sets new standards in functionality and design – and is also sustainable.

## Innovation with a customer focus

Developed by leading designers and microbiologists, the HYGINITY dispenser series sets new standards in the hygiene industry and puts people at the centre. It stands for revolutionary simplicity and cleanliness, benefiting everyone – from wholesalers and service staff to decision-makers and end-users. The series focuses on intuitive design, leading to user-friendly, time-saving, and easy-to-install solutions for washrooms.

## For sustainable washroom solutions

From private offices to large public facilities – the HYGINITY dispenser series prioritises sustainability for every requirement. A high proportion of recycled ABS and recyclability are just as important as usage down to the last sheet. HYGINITY is the hygiene solution from Satino – more flexible and easier than ever.



# All product highlights at a glance.



---

## **Ease of use**

Designed for easy and intuitive use by users, maintenance staff, and installers.



---

## **Sustainability**

Sustainably designed for high durability and more efficient dosing, saving valuable resources.



---

## **Hygiene**

Developed in collaboration with microbiologists to ensure a high level of safe hygiene.



---

## **Intuitive design**

One of the most aesthetically pleasing designs in Europe, created to enhance any washroom.

---

01



02



# The functions - simple and intuitive.

## 01 Easy visibility of fill levels

Improved display of fill levels through a continuous transparent window and easier visual inspection.

## 02 Effortless opening with soft-opening technology

Optimal opening depending on the dispenser, either upwards or downwards – for more flexible placement in washrooms. The integrated door stopper and soft-opening simplify refilling hygiene paper.

## 03 The mounting plate

The HYGINITY dispenser series is equipped with the proven mounting plate from the previous Satino dispensers and enhanced with an integrated spirit level. This ensures an effortless switch to HYGINITY and optimised wall mounting.

03



04



## 04 The new locking system

Dispensers need to adapt to the requirements of the washroom. With HYGINITY's new patented locking system, this is precisely possible. The dispenser can be switched between a standard lock and a permanent lock as needed.



# New from the ground up.

## Available in black or white.



### Interfold Towel Dispenser XL

- For high usage frequencies, e.g., at airports or stadiums
- Robust and easy to maintain
- Durable and sustainable thanks to recyclable monomaterial
- Suitable for up to 5 Z- and W-fold packs

Dimensions (mm): H 664 mm | W 316 mm | D 129 mm  
 Compatible with: Satino PT2 | BlackSatino PT20  
 Item No.: White 333408 | Black 333409



### Interfold Towel Dispenser S

- Suitable for smaller washrooms and low frequencies
- The slim design integrates space-savings into all washrooms
- Suitable for all Z- and W-fold hygiene papers from Satino by WEPA

Dimensions (mm): H 343 mm | W 301 mm | D 129 mm  
 Compatible with: Satino PT2 | BlackSatino PT20  
 Item No.: White 333412 | Black 333413



### Folded Towel Dispenser XL

- For high usage frequencies, e.g., at airports or stadiums
- Robust and easy to maintain
- Durable and sustainable thanks to recyclable monomaterial
- Suitable for up to 5 V- and C-fold packs

Dimensions (mm): H 671 mm | W 316 mm | D 165 mm  
 Compatible with: Satino PT3 | BlackSatino PT30  
 Item No.: White 333410 | Black 333411



### Folded Towel Dispenser S

- Suitable for smaller washrooms and low frequencies
- The slim design integrates space-savings into all washrooms
- Suitable for all V- and C-fold hygiene papers from Satino by WEPA

Dimensions (mm): H 350 mm | W 301 mm | D 165 mm  
 Compatible with: Satino PT3 | BlackSatino PT30  
 Item No.: White 333402 | Black 333403



### AutoCut Dispenser

- Autonomous operation without battery or power consumption
- Low consumption for maximum refill intervals
- Optimised cutting technology for reliable and durable paper dispensing
- With a new pushbar for efficient paper flow

Dimensions (mm): H 418 mm | W 318 mm | D 232 mm  
 Compatible with: Satino SYS1  
 Item No.: White 333418 | Black 333419



### Sensor Towel Dispenser

- A hygienic solution thanks to touchless paper dispensing
- 30% higher battery and power efficiency compared to the predecessor
- Flexible settings for paper lengths, pause intervals and advance
- Optimised tear-off teeth for a pleasant user experience

Dimensions (mm): H 390 mm | W 318 mm | D 232 mm  
 Compatible with: Satino SYS1  
 Item No.: White 333420 | Black 333421



### Centrefeed Dispenser Plus

- The secure dispenser against vandalism for medium to high frequencies
- Optional individual tear-off length or single-sheet dispensing for maximum economy
- Conversion of the paper outlet with a few simple steps

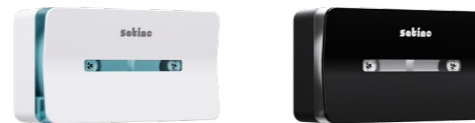
Dimensions (mm): H 294 mm | W 260 mm | D 245 mm  
 Compatible with: Satino CF1 | BlackSatino CF40  
 Item No.: White 333416 | Black 333417



### Folded Towel Dispenser XS

- Our recommendation for smaller washrooms and low frequencies
- Flexible mounting and refilling, thanks to vertical front opening
- Easy to handle, easy to clean

Dimensions (mm): H 176 mm | W 301 mm | D 151 mm  
 Compatible with: Satino PT3  
 Item No.: White 333428 | Black 333429



### Jumbo Toilet Paper Dispenser Centrefeed

- Maximum supply security and long refill intervals through new double-roll function
- Economical and efficient, thanks to single-sheet dispensing
- Also suitable for hygienically sensitive areas

Dimensions (mm): H 228 mm | W 411 mm | D 145 mm  
 Compatible with: Satino CF2  
 Item No.: White 333414 | Black 333415



### Jumbo Toilet Paper Dispenser L

- The economical dispenser solution for large rolls
- Easy to maintain and service-friendly with simple, quick roll changes
- Includes integrated roll brake to prevent vandalism or excessive use

Dimensions (mm): H 350 mm | W 340 mm | D 139 mm  
 Compatible with: Satino JT2 | BlackSatino JT20  
 Item No.: White 333406 | Black 333407



### Jumbo Toilet Paper Dispenser S

- The smaller version for large rolls with up to 18 cm roll diameter
- Includes integrated roll brake to prevent vandalism or excessive use
- Up to 10% more economical usage down to the last sheet through internal end-of-roll function

Dimensions (mm): H 283 mm | W 261 mm | D 140 mm  
 Compatible with: Satino JT1  
 Item No.: White 333404 | Black 333405



### Sensor Clean & Care Dispenser 1,000

- For the highest level of hygiene through touchless application
- Efficient battery and power consumption with optimised mechanism
- Reliable even for long supply intervals and high frequencies
- Multifunctional for soaps or disinfectants

Compatible with: Satino SF1  
 Item No.: White 333436 | Black 333437



### System Twin Roll Toilet Paper Dispenser

- For ecological consumption down to the last sheet
- Service-friendly and for long intervals through optimised double-roll function
- Simple change mechanism when the lower roll is empty
- For two hygiene paper rolls with up to 100 metres of length

Dimensions (mm): H 379 mm | W 147 mm | D 177 mm  
 Compatible with: Satino JT3  
 Item No.: White 333422 | Black 333423



### Sensor Clean & Care Dispenser 500

- For the highest level of hygiene through touchless application
- Efficient battery and power consumption with optimised mechanism
- Reliable even for small washrooms and low frequencies
- Multifunctional for soaps, cleaners, or disinfectants

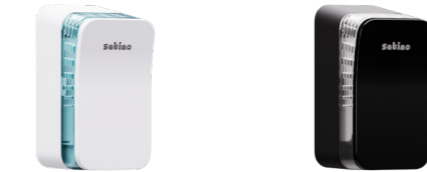
Dimensions (mm): H 230 mm | W 122 mm | D 117 mm  
 Compatible with: Satino SF2  
 Item No.: White 333432 | Black 333433



### Single Sheet Toilet Paper Dispenser

- Proven hygienic single-sheet dispensing – e.g., in healthcare or care settings
- Service-friendly through simple and continuous refill options
- Optimised dispenser volume for up to 600 sheets

Dimensions (mm): H 350 mm | W 147 mm | D 142 mm  
 Compatible with: Satino BT1  
 Item No.: White 333424 | Black 333425



### Air Freshener Eco

- Autonomous and reliable – without batteries or power connection
- Service-friendly through simple cartridge replacement
- Optimised internal mechanism for visualisation of the fill level

Dimensions (mm): H 175 mm | W 91 mm | D 99 mm  
 Compatible with: Satino AR1  
 Item No.: White 333440 | Black 333441



### Twin Roll Toilet Paper Dispenser

- The practical solution for up to two small and midi rolls
- Long-term hygienic through separate integration of the spare roll
- Modern and flexible even for the smallest toilet cubicles

Dimensions (mm): H 186 mm | W 301 mm | D 159 mm  
 Compatible with: Satino MT1  
 Item No.: White 333426 | Black 333427



### Hygienic Bag Dispenser

- The secure and slim essential for toilet cubicles and comprehensive hygiene
- Flexible mounting through either adhesive or screw attachment
- Service-friendly thanks to easy direct refilling

Dimensions (mm): H 151 mm | W 100 mm | D 34 mm  
 Compatible with: Satino HB1  
 Item No.: White 333438 | Black 333439



### Manual Clean & Care Dispenser 1,000

- The autonomous hygiene solution without battery and power consumption
- Optimised internal mechanism for easy and reliable manual application
- Multifunctional for soaps or disinfectants
- Optional upgrade: conversion to a hygienic arm lever dispenser in < 1 min.

Compatible with: Satino SF1  
 Item No.: White 333434 | Black 333435



### FemCare Dispenser

- The new 3-in-1 solution for feminine hygiene products and comprehensive hygiene
- For hygiene bags, up to 30 sanitary towels, and 160 tampons in just one compact dispenser
- Quick and efficient refilling through service-friendly openings

Dimensions (mm): H 116 mm | W 212 mm | D 251 mm  
 Compatible with: Satino FC1  
 Item No.: White 333442 | Black 333443

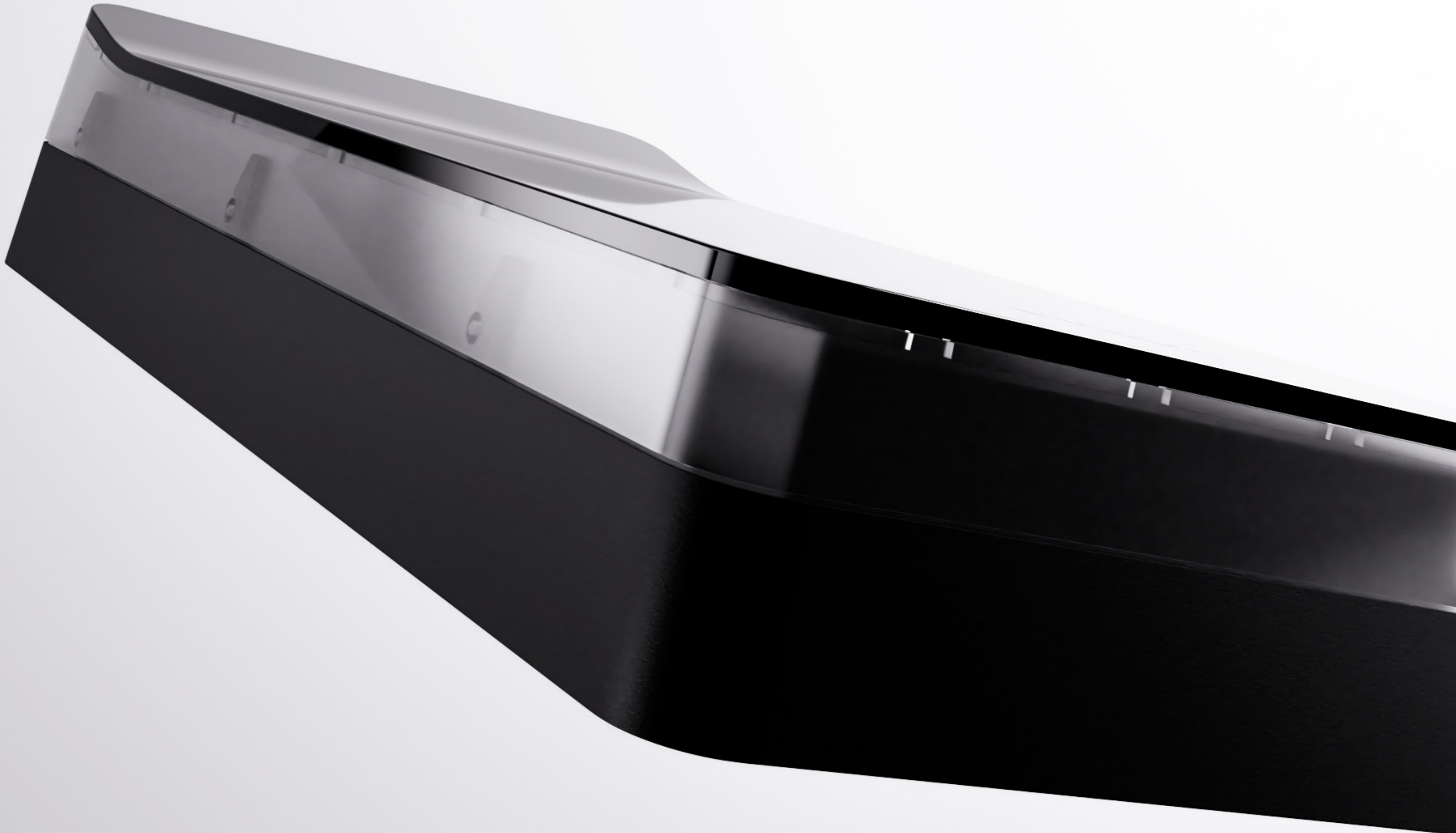


### Manual Clean & Care Dispenser 500

- The autonomous hygiene solution without battery and power consumption
- Optimised internal mechanism for easy and reliable manual application
- Multifunctional for soaps, cleaners, or disinfectants
- Optional upgrade: conversion to a hygienic arm lever dispenser in < 1 min.

Dimensions (mm): H 261 mm | W 122 mm | D 117 mm  
 Compatible with: Satino SF2  
 Item No.: White 333430 | Black 333431





# Our services for your washrooms.

## Spare Part Shop

Dispenser damaged by vandalism? Lost a dispenser key? With the new spare parts shop, you can easily order original spare parts online and quickly restore usual hygiene in the washroom. Compared to buying a new dispenser, you not only save costs but also increase the longevity and sustainability of HYGINITY dispensers.

## Installation Service

With our installation service, we do the work for you! With our partners and experts, we professionally install the HYGINITY dispensers as desired in your premises. This saves your resources and benefits from a simple solution to hygienically secure washrooms.

## Smart-ready

In a connected world, hygiene solutions are also evolving. With HYGINITY's Smart Ready functions, you are already prepared for the future of hygiene today and can expand the dispensers with a sensor. This allows fill levels to be controlled, cleaning routes optimised, and consumables managed.

# Measurable savings, simple solution.

**With Circular Services by WEPA, the concept of the circular economy is not just a thought but becomes a reality. Used hand towel paper from your organisation or facility becomes the raw material for your new hygiene paper. In combination with Satino PureSoft or BlackSatino GreenGrow, the ecological fibre footprint can be reduced by up to 70%.\***

## How paper recycling works:

- Your used towel paper is no longer disposed of as residual waste but collected separately. For your washroom visitors and customers, everything remains as usual.
- The towel paper is used as a valuable raw material for the production of new hygiene paper. With advanced processes, new hygienically safe products are created.
- The newly manufactured hygiene paper comes back to you and is used in your washrooms. The cycle is complete.

Avoid waste, save resources, improve hygiene: paper recycling combined with HYGINITY dispensers is worthwhile for the environment and your organisation.

\*Compared to virgin wood-based fibres.



# HYGINITY. The new standard for hygiene.

Available via:

WEPA Professional GmbH | Rönkhäuser Straße 26 | 59757 Arnsberg | Germany  
+49 (0) 2932 307 - 0 | [satino@wepa.eu](mailto:satino@wepa.eu)



→ Find out more about the  
solutions from Satino:  
[www.satino-by-wepa.eu](http://www.satino-by-wepa.eu)



→ Find out more about the  
solutions from BlackSatino:  
[www.blacksatino.eu](http://www.blacksatino.eu)