



## BROCHURE

Washroom solutions that combine hygiene, design and sustainability.



CONNECTED BY PURPOSE.



## CONNECTED BY PURPOSE.

Washroom hygiene is an essential part of our day to day lives, but it's something we never really think about; How hygiene products are manufactured, transported and processed – especially when it comes to finding sustainable solutions – is often taken for granted.

# WE BELIEVE THERE'S A DIFFERENT WAY OF DOING THINGS

It's imperative that we start making changes now, for the future of our world. By working in collaboration - listening to our partners, customers and expert teams - we can help to drive this change. By daring to say 'no' and challenging the norm, we take the freedom to focus on being meaningful and generate a lasting impact.

We're constantly developing our business to try and find the best possible solutions. We believe that honesty and integrity in everything we do, and more importantly, what we will not do, will carry us through to tomorrow and beyond. This ethos will take us into the future and will lead to a portfolio of smart, sustainable products and services.

This is why we at BlackSatino aim to make a difference. We want to enhance every aspect of our users washroom experience – all the while maintaining a clear focus on sustainability, making a difference to the world.

Our philosophy is to ensure that our solutions are as sustainable and circular as they can be. We are turning our attention to how products are designed, manufactured and experienced. We believe that sustainability and style can go hand in hand to create contemporary products and associated services for washroom facilities. We want every visit to the toilet facilities to be a pleasant one. After all, this reflects on the image of the organisation responsible for maintaining these areas.

We engage in active conversations and work together with all parties to ensure that we provide innovative, future-proof solutions and services. This is to make sure that your users –employees, students and general visitors– always have the best possible experience.

TO US, SUSTAINABILITY IS A JOURNEY  
AND WE INVITE YOU TO COME ALONG.





## CIRCULAR THINKING IS IN OUR DNA

# OUR JOURNEY

### SUSTAINABLE GROWTH AND FURTHER INNOVATION

BlackSatino's sanitary solutions are circular. That means the range is made from sustainable and responsibly sourced raw materials – with absolutely no harmful chemicals. That makes it safe for both people and the environment, and completely CO<sub>2</sub> neutral.

At WEPA, we believe that there's always room for improvement. We're always looking for new ways to innovate and develop our products and services to be the best they can be. We have developed a unique procedure that enables us to process locally sourced, alternative raw materials safely and effectively in varying compositions and volumes. The process involves extracting paper fibre from waste streams and utilising this as a valuable raw material to create new products. In addition, we keep the plastics used to produce BlackSatino dispensers in a technological loop, re-using it after their

economical life cycle. This process avoids unnecessary extraction of raw materials from the earth.

### FUTURE-PROOF

At present, we as a society extract more raw materials from the earth than the earth is able to replenish. Ultimately, our resources are running out – and to further contribute to the issue, we're producing waste at an unmanageable rate. We are becoming more and more aware of how finite the earth's resources are, and more businesses like ours are thinking about the future, and taking the next step towards circular solutions.

While behaving smartly and economically with raw materials is possible within a linear economy, ultimately it only delays the issue. The solution is to think and work in cycles, transitioning into a circular economy.

At WEPA, we are ready for this transition. In our line of work, the opportunities lie in alternative solutions and locally-sourced raw materials.

For this reason, we have been working for some time on circular solutions and closed cycle production. Thanks to an innovative process, we are able to safely use waste paper streams and other sustainable paper fibres in varying compositions as raw materials for the production of hygiene paper. Our factory is seen as a roundabout for raw materials.

### ALTERNATIVE RAW MATERIALS

As well as recycled paper, we are able to reuse cardboard coffee cups, drink cartons, bottle labels, used paper hand towels and sustainably and locally grown Miscanthus fibre are used as a raw material for toilet paper and paper hand towels.

WEPA Professional offers organisations the opportunity to participate in the circular economy. By partnering with us and allowing us to harness their paper waste streams, WEPA can produce BlackSatino washroom products which are subsequently delivered back via partners for use in the company's facilities.

By engaging in this collaboration, we are making circular steps and closing the loop!

### INNOVATION

In an inhouse-developed process we extract the cellulose fibre from Miscanthus and apply it unbleached in the production of hygienic paper.



- ▷ Renewable resource
- ▷ Minimal requirements
- ▷ Positive effects on biodiversity
- ▷ Local cultivation
- ▷ Free from harmful substances
- ▷ Highest fibre yield



Miscanthus is a highly sustainable raw material and very rich in cellulose. This makes it ideal for our tissue production, in combination with other waste paper streams, to anticipate on the increasing scarcity of recycled paper. In this way, we remain at the forefront of sustainability.

Life Cycle Analyses show that the ecological footprint of Miscanthus - compared to other fresh woodbased fibres - is the smallest. And that is because of the sustainable characteristics of the plant.

Miscanthus is a renewable resource. The plant has a lifespan of about 20 years, each year growing to its full height. Miscanthus grows under very mild conditions, has low soil requirements and does not deplete the soil, because it has an internal nutrient cycle. In fact, Miscanthus has the special property that it improves the soil and has a positive effect on biodiversity. Miscanthus is grown locally, without the need for fertilization or irrigation. The use of pesticides is also unnecessary. This means that no harmful substances end up in the environment.

With Miscanthus we choose for the use of a local cellulose fibre and a futureproof and sustainable alternative for the production of toilet paper and hand towel paper.



-65% ECOLOGICAL FOOTPRINT  
IN COMPARISON TO  
VIRGIN WOODBASED FIBRES\*

\* Based on life cycle analysis

# HYGIENE PAPER

▷▷▷ A NEW PURPOSE FOR ALL YOUR PAPER WASTE USING BLACKSATINO'S SUSTAINABLE SANITARY DESIGN SOLUTIONS.

## WASTE BECOMES RESOURCE

We stimulate and facilitate circular cooperations by means of a closed loop. Within unique closed-loop concepts, we use secondary raw materials for the production of **BlackSatino** hygienic paper.

The cycles are based on paper waste streams released in organisations.

Only the raw materials for the BlackSatino paper types differ, and so does the external appearance.

The recycling methods used to create BlackSatino minimise environmental impact by only utilising local products.

## CIRCULAR DISPENSERS



### ▷ BLACKSATINO ORIGINAL

Used (confidential) office paper or archive paper

### ▷ BLACKSATINO BLEND

Cardboard coffee cups and used paper towels are processed through a mix of alternative raw materials, alongside drink cartons, bottles and labels.

The composition of the product can vary based on internal and external developments. The paper has a unique, natural colour due to the mix of materials used.

### ▷ BLACKSATINO GREENGROW

Cellulose fibre from Miscanthus combined with various used paper streams.

The Miscanthus fibre is applied unbleached, which gives the paper a light beige colour and makes it even more natural.

The BlackSatino dispensers are included in this circular concept. They are produced from plastic granules which once have composed other plastic objects.

By making use of residual flows in this way, we ensure that we secure valuable raw materials and continue to reuse them in a technological cycle and produce beautiful, sustainable products with added value.

## RECYCLING PROCESS

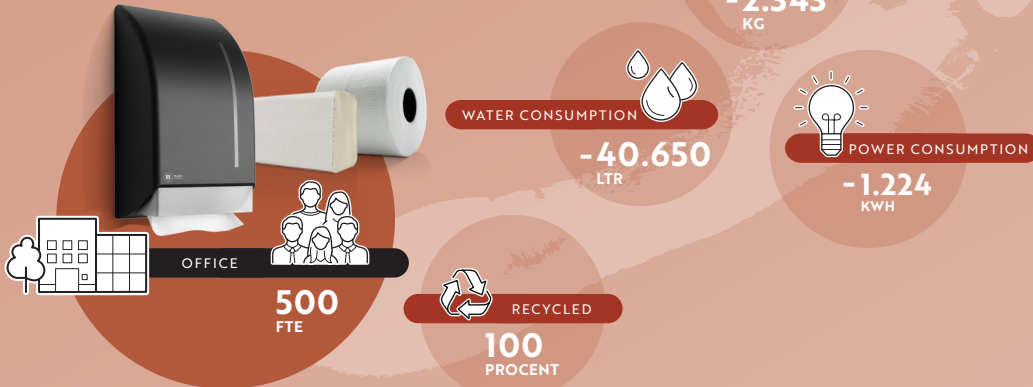
WEPA Professional ensures responsible recycling of your old hygiene dispensers by dismantling them, transporting and delivering them to a specialised depot.

In this depot, the ABS plastic is ground into a plastic granulate, which is then reused.

# THE IMPACT OF BLACKSATINO ON YOUR ECOLOGICAL FOOTPRINT

## Environmental savings with BlackSatino

BlackSatino has a positive impact on your company's ecological footprint. A company with 500 FTE / employees achieves considerable environmental savings in the areas of raw materials, water, electricity and CO<sub>2</sub> every year.



safe for humans and the environment



100% sustainable energy



sustainable production



recycled paper and dispensers

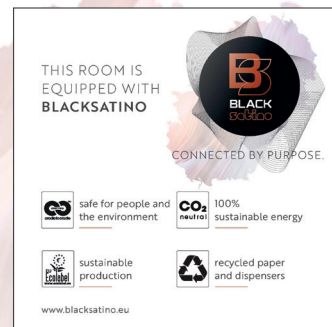
\* Certified products bear the seal of quality. Cradle to Cradle Certified® is a registered trademark of the Cradle to Cradle Products Innovation Institute.

# VISITOR EXPERIENCE IN THE WASHROOM FACILITIES

## SUSTAINABILITY AND DESIGN

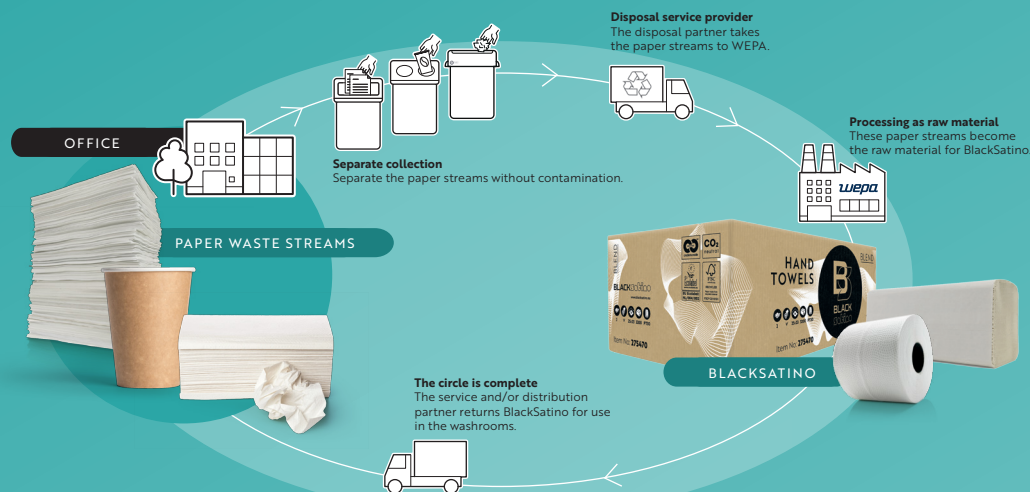
Everything is about sustainability and experience. Even in the washroom! In business, the standard and quality of your toilet experience can contribute to your overall image.

We know sustainability is possible without compromising on design. BlackSatino is sustainable as well as stylish, and supports the overall image of your company through a combination of stylish dispensers in black or white, specially developed scent lines for soaps, air fresheners and toilet seat cleaners, and the sustainable character of the refills.



● Communication sign for sanitary area

## BLACKSATINO PAPER CYCLE



We encourage and enable a circular economy by closing the cycle.

## CIRCULAR COOPERATION

### IN PRACTICE

Within one cycle, the paper waste streams are safely transported to our factory to be made into BlackSatino hygiene paper.

The toilet paper and paper towels that we make from this recycled material is then supplied back to the companies who provided us with the original paper source, for use in their own washroom facilities.

Together with our partners, we close the cycle, help the environment, and act responsibly in-line with the worldwide waste and raw materials problem. We also support businesses with additional sanitary services and communication about the sustainable choice.



WE ARE INVITING ORGANISATIONS TO PARTICIPATE IN THIS, TOGETHER WITH US.



▷▷▷ BLACKSATINO PRODUCTS

TOILET USE

**System toilet roll dispenser**

Code 331950    Code 332740



**CONSUMABLES**

**System toilet rolls**

- 313830 : Original 2-ply | 100 m.
- 313960 : Blend 2-ply | 100 m.
- 341680 : GreenGrow 2-ply | 100 m.
- 314670 : GreenGrow 3-ply | 70 m.

Product code:    **ST10**

**Compact toilet roll dispenser**

Code 331940



**CONSUMABLES**

**Compact toilet rolls**

- 313840 : Original 2-ply | 100 m.
- 062700 : Original 2-ply | 400 sheets
- 313950 : Blend 2-ply | 87 m.
- 065630 : GreenGrow 2-ply | 320 m.
- 076710 : GreenGrow 3-ply | 200 m.

Product code:    **CT10**

**Jumbo toilet roll dispenser**

Code 331960    Code 332730



**CONSUMABLES**

**Jumbo toilet rolls**

- 306530 : Original 2-ply | 380 m.
- 314700 : GreenGrow 2-ply | 180 m.
- 314690 : GreenGrow 2-ply | 380 m.

Product code:    **JT20**

**Dispenser for folded toilet paper - single**

Code 332040



**CONSUMABLES**

**Folded toilet paper**

- 062750: Original 2-ply | 190 sheets

Product code:    **BT20**

**Dispenser for folded toilet paper - double**

Code 332050



**CONSUMABLES**

**Folded toilet paper**

- 062750: Original 2-ply | 190 sheets

Product code:    **BT20**

**Toilet seat cleaner dispenser**

Code 331980    Code 332750



**CONSUMABLES**

**Toilet seat cleaner**

- 332270: SparQ | 6 x 750 ml
- 332230: Qlash | 6 x 750 ml

Product code:    **SC10**



## Toilet brush with holder

Code 332130



### CONSUMABLES

332150 : Replacement brush

### CONSUMABLES TOILET USE

<u>ST10</u>	313830	Original system toilet rolls	2-ply   100 m.
	313960	Blend system toilet rolls	2-ply   100 m.
	314680	GreenGrow system toilet rolls	2-ply   100 m.
	314670	GreenGrow system toilet rolls	3-ply   70 m.
<u>CT10</u>	313840	Original compact toilet rolls	2-ply   100 m.
	062700	Original toilet paper	2-ply   400 sheets
	313950	Blend compact toilet rolls	2-ply   87 m.
	065630	GreenGrow compact toilet rolls	2-ply   320 m.
	076710	GreenGrow compact toilet rolls	3-ply   200 m.
<u>JT20</u>	306530	Original jumbo toilet rolls	2-ply   380 m.
	314700	GreenGrow jumbo toilet rolls	2-ply   180 m.
	314690	GreenGrow jumbo toilet rolls	2-ply   380 m.
<u>BT20</u>	062750	Original folded toilet paper	2-ply   190 sheets/bundl
<u>SCI0</u>	332270	SparQ toilet seat cleaner	6 x 750 ml
	332230	Qlash toilet seat cleaner	6 x 750 ml
	332150	Replacement brush	

## Hand towel dispenser V-fold

Code 331930 Code 332770



### CONSUMABLES

#### Hand towels

274570 : Original 2-ply | V-fold  
275470 : Blend 2-ply | V-fold  
275890 : GreenGrow 2-ply | V-fold

Product code: PT30

## Hand towel roll dispenser

Code 335340



### CONSUMABLES

#### Hand towel rolls

306560 : Original 2-ply | 175 m.

Product code: PT50

## Hand towel dispenser Z-fold

Code 332070



### CONSUMABLES

#### Hand towels

275350 : Original 2-ply | Z-fold  
275880 : GreenGrow 2-ply | Z-fold

Product code: PT20

HAND DRYING

## Wiping roll dispenser midi

Code 332470



### CONSUMABLES

#### Wiping rolls

306360: Original 1-ply | 300 m.

Product code: CF40

### CONSUMABLES HAND DRYING

<u>PT30</u>	274570	Original hand towels	2-ply   25 x 23 cm   V-fold
	275470	Blend hand towels	2-ply   25 x 23 cm   V-fold
	275890	GreenGrow hand towels	2-ply   25 x 23 cm   V-fold
<u>PT50</u>	306560	Original hand towel rolls	2-ply   175 m.
<u>PT20</u>	275350	Original Z-fold hand towels	2-ply   20,6 x 24 cm   Z-fold
	275880	GreenGrow hand towels	2-ply   20,6 x 24 cm   Z-fold
<u>CF40</u>	306360	Original midi wiping rolls	1-ply   300 m.

## HAND CLEANING

### Soap dispenser

Code 331970

Code 332760



#### CONSUMABLES

Soap / hand disinfection gel

332260: SparQ foam soap | 6x750 ml  
 332250: SparQ hand soap | 6x750 ml  
 332220: Qlash foam soap | 6x750 ml  
 332200: NiQs foam soap | 6x750 ml  
 332490: NiQs hand disinfection gel

Product code: **SF30**

### CONSUMABLES HAND CLEANING

<u>SF30</u>	332260	SparQ foam soap	6 x 750 ml   approx. 1875 dosages
	332250	SparQ hand soap	6 x 750 ml   approx. 750 dosages
	332220	Qlash foam soap	6 x 750 ml   approx. 1875 dosages
	332200	NiQs foam soap	6 x 750 ml   approx. 1875 dosages
	332490	NiQs disinfection gel	6 x 750 ml   approx. 750 dosages

This hand disinfection gel is approved for use in the Netherlands, Belgium, Germany, Denmark, Finland and Norway.

## AIR FRESHENER

### Air freshener dispenser

Code 331990

Code 332790



#### CONSUMABLES

Air freshener

332280: SparQ | 6 x 225 ml  
 332240: Qlash | 6 x 225 ml

Product code: **AR30**

### CONSUMABLES AIR FRESHENER

<u>AR30</u>	332280	SparQ air freshener	6 x 225 ml   app. 8-10 weeks of operation
	332240	Qlash air freshener	6 x 225 ml   app. 8-10 weeks of operation

### CONSUMABLES (FEMININE)HYGIENE

<u>HB10</u>	331560	Satino sanitary bags	48 packages x 25 pieces
-------------	--------	----------------------	-------------------------

## (FEMININE)HYGIENE

### Sanitary bag dispenser

Code 331570

Code 332720



#### CONSUMABLES

Sanitary bags

331560: Satino | 48 x 25 pcs.

Product code: **HB10**

### Hygiene bin 8 liter

Code 332170

Code 332700



### Hygiene bin 23 liter

Code 331840

Code 332780



## Waste bin 23 liter

Code 331830

Code 332710



## Waste bin 43 liter

Code 331760

Code 332690



## Coat hook

Code 332120



BlackSatino dispensers are available on loan, purchase and rental basis, always in combination with BlackSatino consumables.



FOR MORE INFORMATION ABOUT OUR PRODUCTS  
PLEASE CONSULT OUR WEBSITE: [WWW.BLACKSATINO.EU](http://WWW.BLACKSATINO.EU)



#### ABOUT WEPA

At WEPA, product innovations and sustainability have been going hand in hand for over 80 years. WEPA Professional GmbH is a trendsetter in the development of toilet hygiene solutions that contribute to a cleaner world and a better environment. We make this positive and passionate contribution to our own production sites and the wider environment.

WEPA will keep making progress in sustainability, working towards completely recycled sanitary facilities. With cycle closure offering an answer to sustainability, and taking a step towards the circular economy, WEPA is inviting you to get involved too.

WEPA PROFESSIONAL GMBH  
Rönkhauser Straße 26  
59757 Arnsberg, Germany

[www.blacksatino.eu](http://www.blacksatino.eu)  
[info@blacksatino.eu](mailto:info@blacksatino.eu)

**wepa**

